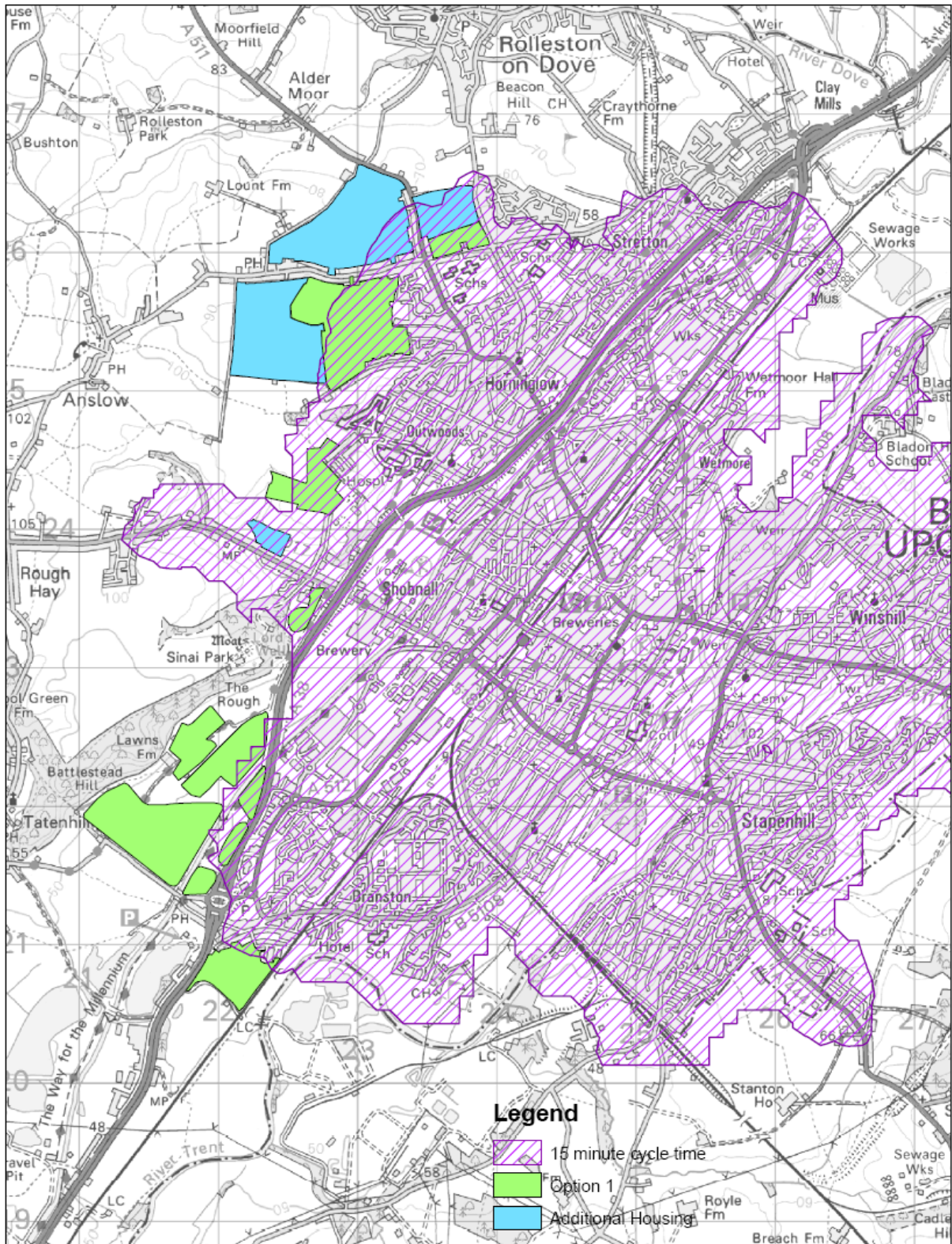


A.4 APPENDIX D – Cycle access to the City Centre within 15 minutes

Option 1

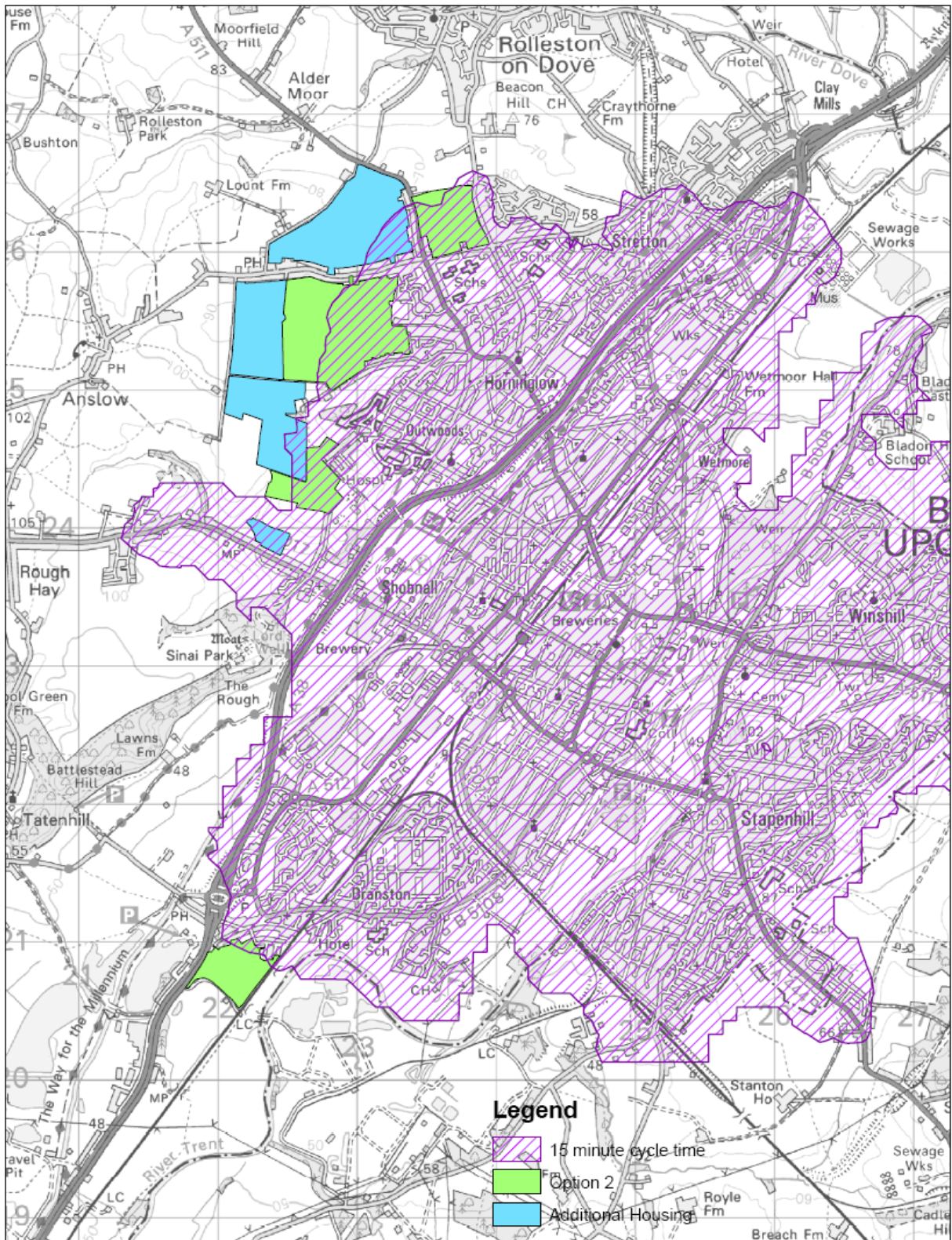


This product includes mapping data licenced from Ordnance Survey with the permission of the Controller of Her Majesty's Stationery Office (C) Crown Copyright and/or database right 2007. All rights reserved. Licence Number 100019422.

Produced by the Integrated Transport & Planning Unit, Development Services Directorate, Staffordshire County Council, 2008.



Option 2

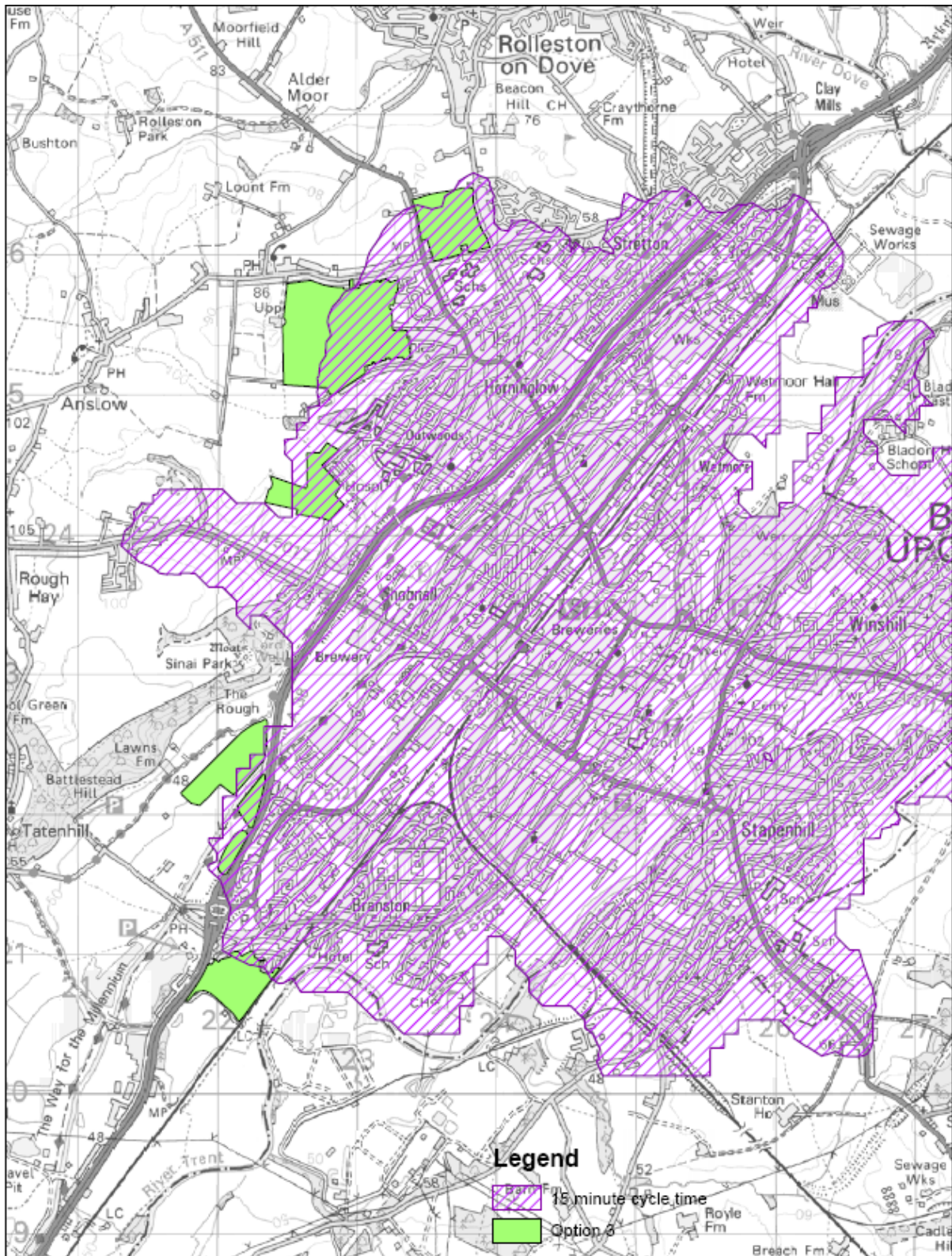


This product includes mapping data licenced from Ordnance Survey with the permission of the Controller of Her Majesty's Stationery Office (C) Crown Copyright and/or database right 2007. All rights reserved. Licence Number 100019422.

Produced by the Integrated Transport & Planning Unit, Development Services Directorate, Staffordshire County Council, 2008.



Option 3



This product includes mapping data licenced from Ordnance Survey with the permission of the Controller of Her Majesty's Stationary Office (C) Crown Copyright and/or database right 2007. All rights reserved. Licence Number 100019422.

Produced by the Integrated Transport & Planning Unit, Development Services Directorate, Staffordshire County Council, 2008.



Atkins Transport Planning

The Axis
10 Holliday Street
Birmingham
B17 9AF

Direct Line: 0121 483 6144
Direct Fax: 0121 483 5252

Craig.shipleigh @atkinsglobal.com

www.atkinsglobal.com

© ATKINS Ltd except where stated otherwise. The ATKINS logo, the "open A" device and the strapline "Plan Design Enable" are trademarks of ATKINS Ltd.

ATKINS

