

NHS East Staffordshire CCG

Interim CCG code

05D

Summary Statistics

This CCG has 19 practices¹, based on those with a registered population in April 2011.

Their total registered population (taken from the Attribution Data Set in April 2011) is 133,000.² This compares to an average for all 212 CCGs in England of 261,000.

This CCG's registered patients live in 2 different upper tier Local Authorities³. The CCG's main LA is Staffordshire. 91% of the CCG's population live there.

For this CCG's main LA, Staffordshire, this CCG accounts for 121,200 (14%) of its population.

This CCG's main provider is Burton Hospitals NHS FT and accounts for 30,022 (67%) of its admissions. These represent 47% of that provider's total admissions.

¹ This may be different to the number of legally defined members of the CCG due to recent closures or special practices.

² Rounded to the nearest thousand.

³ Ignoring LAs with less than 1000 people living there.

1. RAG Ratings

The RAG ratings for this CCG, as supplied by SHAs on 22 March, are:

1) Member Practices	Green
2) Geography boundary/population	Green
3) Geography LA boundaries	Green
4) Impact of size	Amber

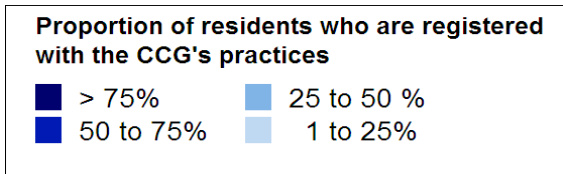
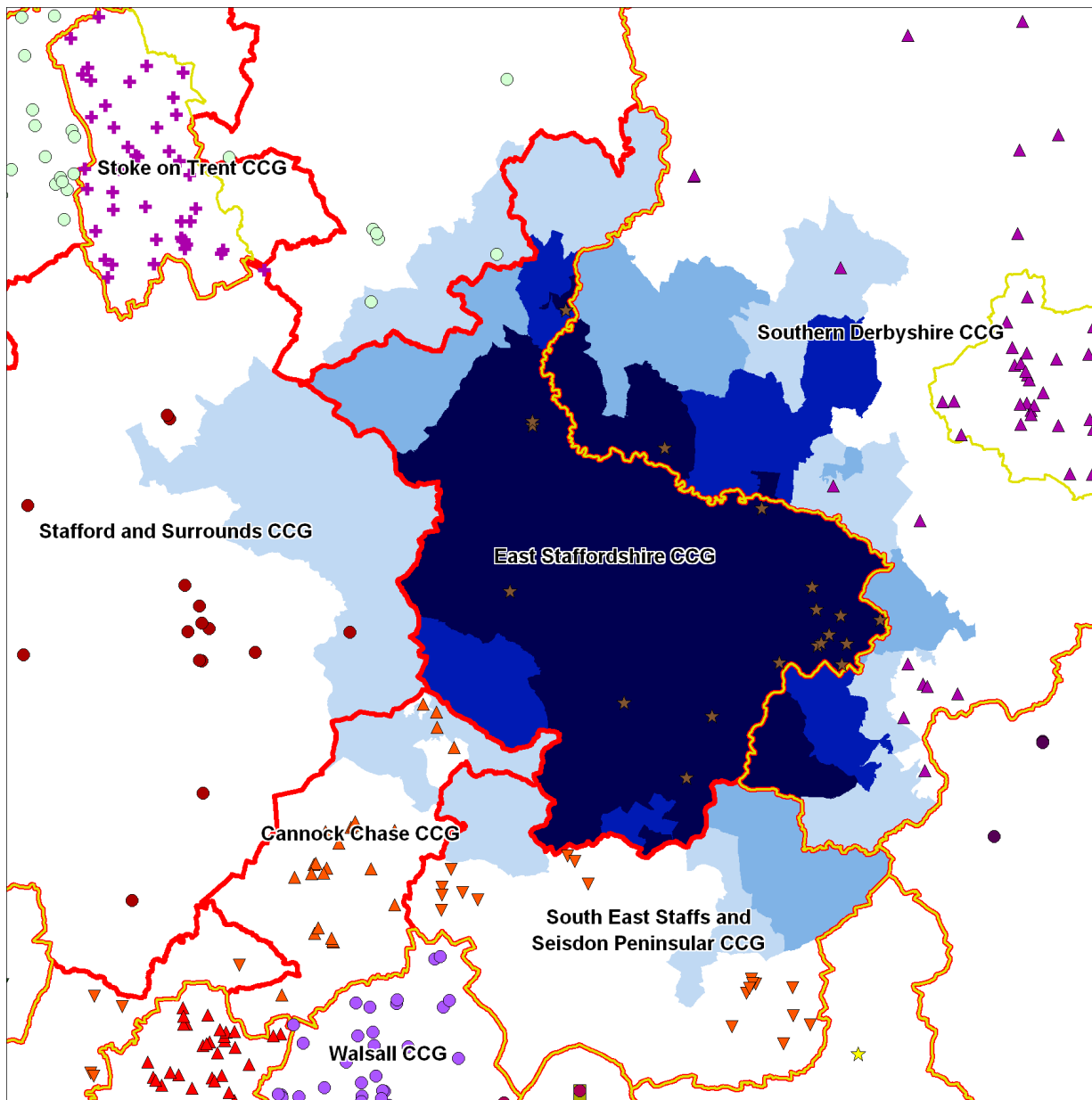
2. Map of CCG location

The map below shows the location of this CCG within the country.



The black outline shows the proposed geographical boundaries of CCGs.

3. Map of CCG area



The map above shows practices with different symbols/colours according to CCG. This CCG's practices are shown as brown stars. Practices are located according to the centroid of their postcode recorded by the Organisation Data Service (branch practices are not shown). LA boundaries are shown as yellow lines and CCG's proposed geographical boundaries as thick red lines (mixed red/yellow lines indicate shared LA/CCG boundaries).

4. Geography and containment

The geographical area of responsibility for this CCG is shown on the map on the previous page. This CCG's geographical area is made up of 75 LSOAs.

The total population of these LSOAs is 124,894 of which 118,968 are registered with this CCG's practices. The total registered population of the CCG practices is 132,687.

Therefore, there are 5,926 people who are registered with other CCG's practices but live in this CCG's area. But there are 13,719 of this CCG's registered population who live in other CCG's area of geographical responsibility.

Using these numbers it is possible to calculate the 'containment' rate for the CCG. This is the number of people who are both registered with the CCG and live in one of its LSOAs (ie 118,968) compared to the registered population of the CCG or the total residents of those LSOAs.

So, for this CCG, the registered-based containment figure is $118,968 / 132,687$ which is 89.7% and the resident-based containment figure is $118,968 / 124,894$ which is 95.3%.

The table below shows the containment statistics for this CCG and, for comparison, the main PCT in this CCG's area and the England average.

Organisation	Registered-based containment	Resident-based containment	Min
This CCG: NHS East Staffordshire CCG	89.7%	95.3%	89.7%
Main PCT: South Staffordshire	96.4%	93.8%	93.8%
England average of CCGs	94.0%	93.9%	93.9%

5. Local Authority boundaries

The table below shows a breakdown of the CCG's population by the main Local Authorities in which its patients live. The 3rd column shows the number of LSOAs in which these patients live and for how many of these LSOAs this CCG is geographically responsible for. The final column shows the proportion of each LA's total population that this CCG has registered with its practices.

Local Authority	Population	no. of LSOAs (of which within this CCG boundary)	% of LA total
Staffordshire	121,244	160 (75)	14.1%
Derbyshire	11,426	47 (0)	1.5%
Others	17	13 (0)	
Total	132,687	220 (75)	

6. Secondary care environment and patient flows

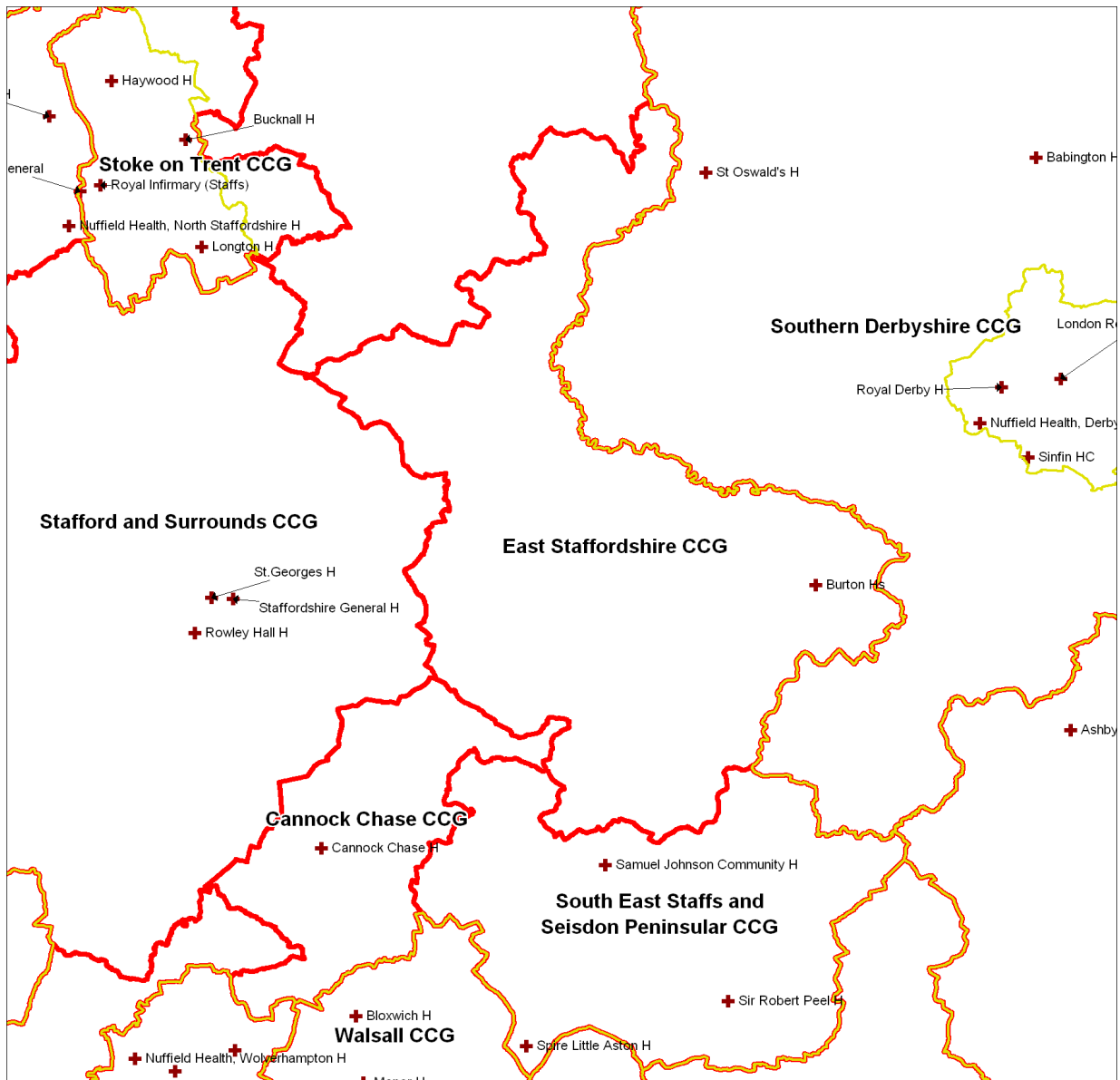
In 2010/11, this CCG's practices had 44,901 inpatient admissions. The table below shows the main providers that were used, the number of admissions at each provider (and as a percent of the CCG's total), the number of those admissions that were elective, and this CCG's admissions as a percent of the provider's total admissions.

Provider	Number of Admissions (%)	<i>Of which elective</i>	% of Provider total
Burton Hospitals NHS FT	30,022 (67%)	9,451	46.8%
Derby Hospitals NHS FT	5,188 (12%)	3,455	2.8%
Nations Healthcare Ltd	4,746 (11%)	4,746	12.6%
Mid Staffordshire NHS FT	1,015 (2%)	613	1.5%
University Hospitals of Leicester NHS Trust	878 (2%)	621	0.3%
Other	3,052 (7%)	1,599	n/a
Total	44,901 (100%)	20,485	n/a

Burton Hospitals NHS FT is the main provider for all of the CCG's practices.

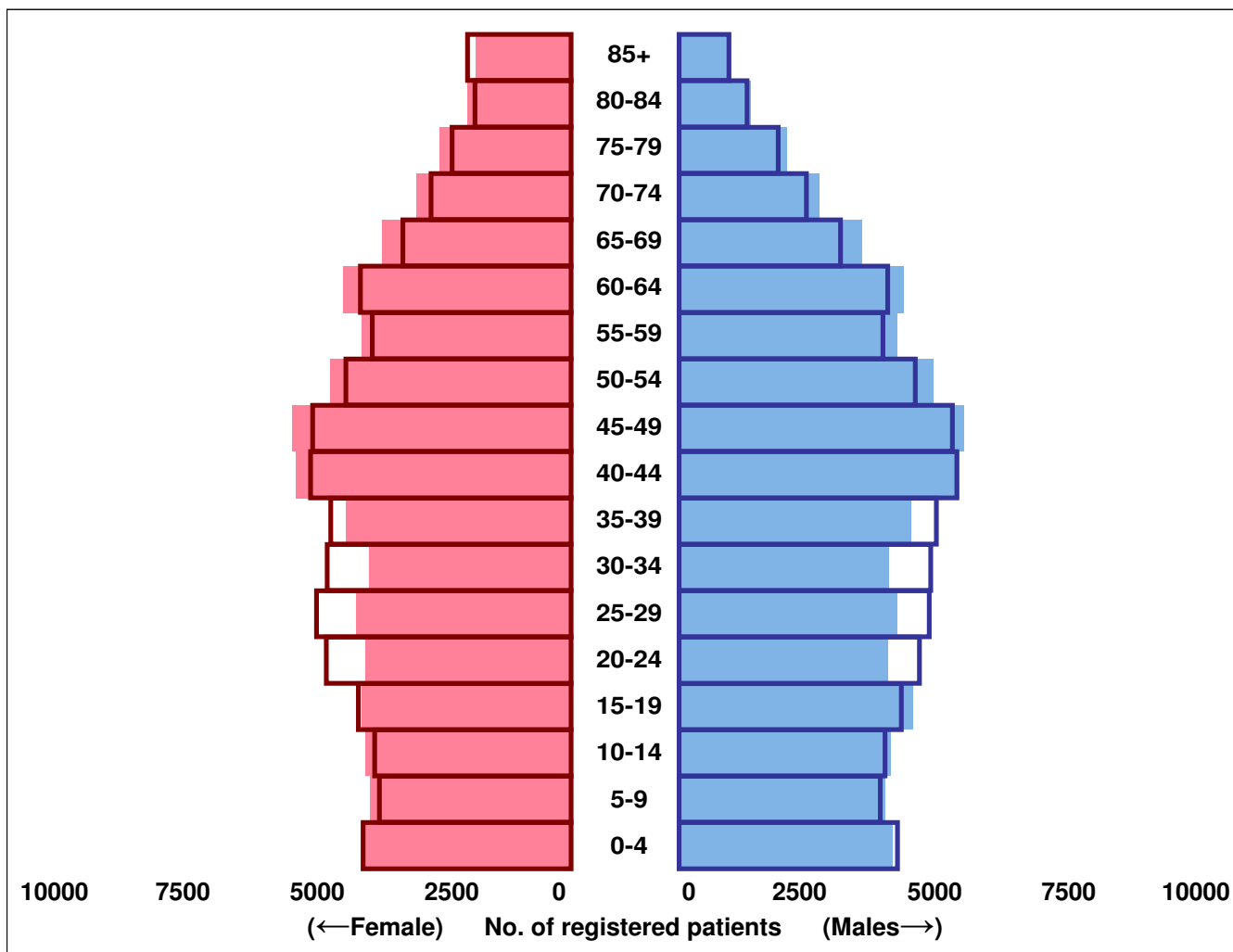
7. Map of provider organisations

The map below shows the sites of providers in and around this CCG (as crosses). Where multiple providers share a location or are very close, these may not be individually labelled. Red lines are proposed CCG boundaries and yellow lines are LA boundaries.



8. Demographics

The chart below shows a population pyramid for this CCG. 17.5% of the CCG's registered population are under age 15 (England average 17.1%) and 7.9% are age 75 or over (England average 7.5%). 50.2% are female (England average 50.2%).



The England average population distribution is overlaid on the chart as an outline.

The table below shows how the CCG population is expected to grow by 2015, 2020, and 2025. This is based on applying weighted averages of ONS population projections by age and Local Authority to the CCG's population.

Year	Population	population 75+
Current (2011)	132,687	10,428
2015	136,011	11,568
2020	140,401	13,751
2025	144,990	16,801
Average annual growth rate 2011 to 2020	0.6%	3.1%
England average annual growth rate 2011 to 2020	0.7%	2.3%

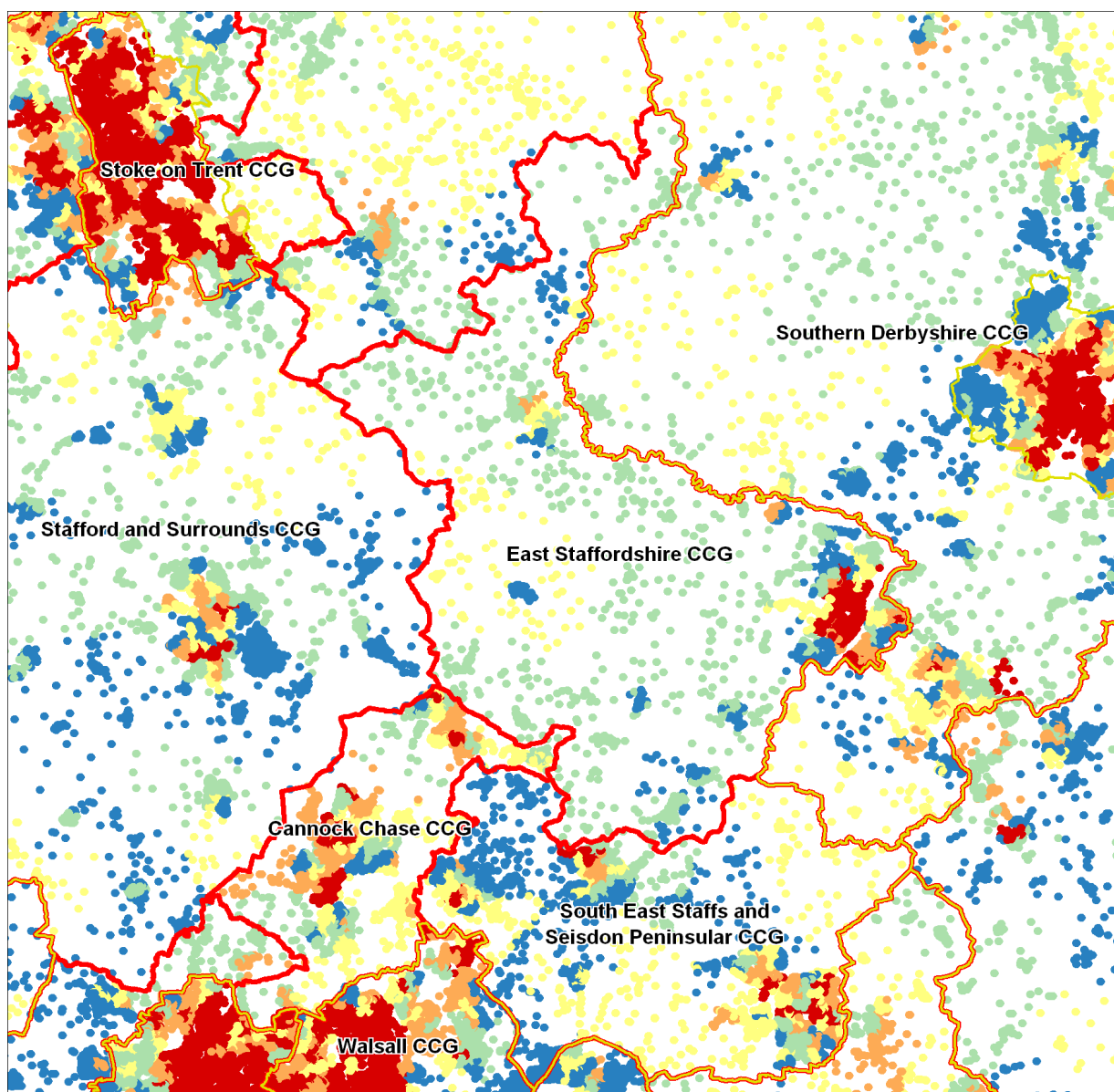
9. Deprivation

Based on the average level of deprivation (measured by the IMD2010) in the LSOAs where this CCG's population live, this CCG is ranked 127 out of 212 CCGs (where 1 is the most deprived). 18% of the CCG's population live in an LSOA that is one of the 20% most deprived in England.

The map below shows the levels of deprivation in the area where this CCG operates. Each postcode within the same LSOA is given the same colour. This presentation emphasizes where people live rather than open countryside.

IMD score by quintile

- Quintile 5 (lowest)
- Quintile 4
- Quintile 3
- Quintile 2
- Quintile 1 (highest)



10. Disease prevalence

The table below shows the prevalence (number and percentage) of diseases covered by the QOF for the practices in this CCG in 2010/11. The chart shows the distribution of the CCG's practices' prevalence in terms of ranks. Individual practices are shown as vertical bars with the height of the bar proportional each practice's population. The blue box shows the range of the middle 50% of practices in the CCG. The large diamond shows the average rank for the CCG and the dashed blue line shows the England average.

QOF Disease Register	Number (%)	and chart
Coronary Heart Disease	4,637 (3.5%)	
Stroke or Transient Ischaemic Attacks (TIA)	2,336 (1.8%)	
Hypertension	18,145 (13.7%)	
Chronic Obstructive Pulmonary Disease	2,030 (1.5%)	
Hypothyroidism	4,540 (3.4%)	
Cancer	2,514 (1.9%)	
Mental Health	702 (0.5%)	
Asthma	8,031 (6.0%)	
Heart Failure	1,089 (0.8%)	
Heart Failure Due to LVD	565 (0.4%)	
Palliative Care	131 (0.1%)	
Dementia	702 (0.5%)	
Atrial Fibrillation	2,105 (1.6%)	
Cardiovascular Disease Primary Prevention	1,486 (1.1%)	
Diabetes Mellitus (17+)	6,137 (5.8%)	
Epilepsy (18+)	891 (0.9%)	
Depression (18+)	12,621 (12.0%)	
Chronic Kidney Disease (18+)	4,040 (3.9%)	
Obesity (16+)	12,992 (12.0%)	
Learning Disability (18+)	463 (0.4%)	

11. Health status (EQ-5D) from the GP Patient Survey

The table and chart below shows some summary statistics on the health status of the population, taken from the GP Patient Survey (2011/12 Q2). It uses the EQ-5D questionnaire, which is a scientifically derived metric for measuring health status. There are five questions which relate to:

- Problems with walking
- Problems with washing and dressing
- Problems with usual daily activities
- Problems with pain or discomfort
- Problems with anxiety or depression

Each question has three possible answers. These can be combined into a single index representing overall health status. The first line of the table shows the overall EQ-5D for this CCG, relative to the England average (of 0.81, on a scale of 0 to 1, where 1 is no problems and 0 is death).

The 2nd, 3rd and 4th lines of the table give the EQ-5D relative to the England average after standardising for differences in age-sex profile, age-sex and deprivation, and age-sex, deprivation and prevalence of long term conditions, respectively. The second part of the table shows the proportion of the CCG's population that experience any problems on each of the individual domains.

GP Patient Survey EQ-5D scores	Difference to England	Practice Ranks Chart (Right = better health)
Overall EQ-5d (Unadjusted)	0.00 vs Eng	
Age-sex adjusted	0.01 vs Eng	
Age-sex and deprivation adjusted	0.00 vs Eng	
Age-sex, deprivation and LTC adjusted	0.00 vs Eng	
Individual components of EQ-5D	% with problem	(Left = better health)
Some problems walking or confined to bed	20.9%	
Some problems washing or dressing or unable	6.7%	
Some problems with usual activities or unable	23.3%	
Moderate or extreme pain or discomfort	38.6%	
Moderate or extreme anxiety or depression	22.8%	

The charts show the distribution of the CCG's practices in terms of ranks. Individual practices are shown as vertical bars with the height of the bar proportional each practice's population. The blue box shows the range of the middle 50% of practices in the CCG. The large diamond shows the average rank for the CCG and the dashed blue line shows the England average.

12. Source and references

Section 1. The RAG rating for the CCGs were supplied by SHAs on 22 March. A full description of each of the RAG domains can be viewed in appendix 2 of *Developing Clinical Commissioning Groups: towards authorisation*.

www.dh.gov.uk/en/Publicationsandstatistics/Publications/PublicationsPolicyAndGuidance/DH_130293

Section 2. The black lines on this map are Location Authority boundaries (Non-metropolitan Counties, Metropolitan Districts, London Boroughs and Unitary Authorities). Contains Ordnance Survey data ©Crown copyright and database right 2012. The areas shaded are based on the proposed geographical boundary of the CCG.

Practice Symbols by CCG

● 00C	▲ 01M	◆ 03E	■ 04Q	★ 06H	✦ 08C	▲ 09L	◆ 11E
▼ 00D	▽ 01N	● 03F	▲ 04R	☆ 06K	● 08D	★ 09N	★ 11H
✦ 00F	★ 01R	● 03G	● 04V	◆ 06L	▼ 08E	★ 09P	★ 11J
▼ 00G	✦ 01T	★ 03H	● 04W	● 06M	★ 08F	▲ 09W	● 11M
◆ 00H	✦ 01V	▲ 03J	✦ 04X	● 06N	✦ 08G	▲ 09X	▲ 11N
▲ 00J	● 01W	◆ 03K	▲ 04Y	▲ 06P	★ 08H	▲ 09Y	▲ 11T
▲ 00K	● 01X	▲ 03L	▲ 05A	▲ 06Q	★ 08J	▲ 10A	▲ 11X
▲ 00L	▼ 01Y	✦ 03M	■ 05C	▲ 06T	● 08K	▼ 10C	◆ 12A
▼ 00M	★ 02A	● 03N	★ 05D	★ 06V	■ 08L	▼ 10D	■ 12D
★ 00N	★ 02D	■ 03Q	■ 05E	★ 06W	◆ 08M	◆ 10E	■ 99A
▼ 00P	◆ 02E	★ 03R	■ 05F	■ 06Y	■ 08N	◆ 10G	◆ 99B
✦ 00Q	✦ 02F	★ 03T	○ 05G	◆ 06Z	✦ 08P	✦ 10H	▲ 99C
★ 00R	● 02G	★ 03V	★ 05H	○ 07J	○ 08Q	▼ 10J	★ 99D
◆ 00T	● 02H	★ 03W	◆ 05J	○ 07K	○ 08R	▼ 10K	★ 99E
▲ 00V	■ 02M	★ 03X	▼ 05L	■ 07L	▲ 08T	▼ 10L	■ 99F
● 00W	★ 02N	◆ 03Y	▼ 05N	■ 07M	▲ 08V	★ 10M	■ 99G
▲ 00X	✦ 02P	★ 04C	■ 05P	○ 07N	★ 08W	● 10N	★ 99H
★ 00Y	▼ 02Q	✦ 04D	▼ 05Q	▼ 07P	★ 08X	○ 10Q	○ 99J
★ 01A	▼ 02R	▲ 04E	◆ 05R	▲ 07Q	★ 08Y	★ 10R	◆ 99K
▼ 01C	★ 02T	▲ 04F	◆ 05T	★ 07R	✦ 09A	● 10T	■ 99M
▼ 01D	★ 02V	▲ 04G	● 05V	★ 07S	■ 09B	▲ 10V	● 99N
★ 01E	★ 02W	▲ 04H	✦ 05W	★ 07T	▼ 09D	◆ 10W	▲ 99P
● 01F	★ 02X	◆ 04J	● 05X	● 07U	▼ 09E	◆ 10X	▲ 99Q
○ 01G	▼ 02Y	▼ 04K	● 05Y	■ 07W	▼ 09F	○ 10Y	
✦ 01H	▼ 03A	● 04L	▲ 06A	■ 07X	▼ 09G	▲ 11A	
○ 01J	■ 03C	★ 04M	■ 06D	★ 07Y	★ 09H	● 11C	
● 01K	◆ 03D	● 04N	● 06F	◆ 08A	● 09J	▲ 11D	

Section 3. Population data is based on the Attribution DataSet (ADS) extracted in April 2011. Practices are located at the centroid of their postcode, as listed by the Organisation Data Service. A full list of the colours and symbols used for the practices in each CCG is given to the right. Contains Ordnance Survey data ©Crown copyright and database right 2012. Contains Royal Mail data ©Royal Mail copyright and database right 2012.

Section 4. Population data is based on the Attribution DataSet (ADS) extracted in April 2011

Section 5. Population data is based on the Attribution DataSet (ADS) extracted in April 2011

Section 6. Activity data is from Hospital Episode Statistics 2010/11. Admissions includes daycases. "Main provider" is defined by admission counts.

Section 7. Provider locations are based on postcode taken from the Organisation Data Service. The list of provider is based on the Hospital Estates and Facilities Statistics with the smallest site removed. Contains Ordnance Survey data ©Crown copyright and database right 2012. Contains Royal Mail data ©Royal Mail copyright and database right 2012.

Section 8. Population data is based on Attribution DataSet (ADS) extracted in April 2011. Population projections are based on ONS central estimates (2010-based) at District LA level.

Section 9. Deprivation is based on the Index of Multiple Deprivation 2010.

www.communities.gov.uk/publications/corporate/statistics/indices2010

Section 10. Disease prevalence is based on the Quality and Outcomes Framework 2010/11.

www.qof.ic.nhs.uk

Section 11. Health status is based on the EQ-5D questions contained in the GP Patient Survey in 2011/12 Quarter 2. The adjusted figures shown are based on a regression analysis of EQ-5D against the adjusted factors listed and the Difference to England average is based on the residuals of this regression.

Produced by the Commissioning Analysis and Intelligence team, with support from

